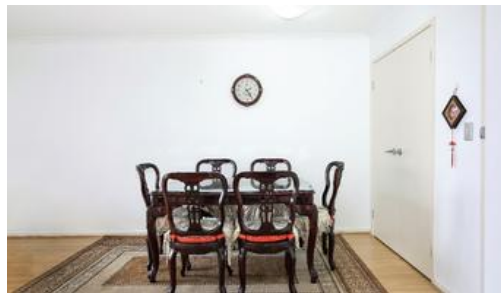




Unit 606, 17-20 The Esplanade, Ashfield



North Facing | District Views

Proudly sitting on Level 6, this apartment offers everything at your fingertips, serenity and convenience at its best. Generous open interior opens up to sun-filled balcony with districts views across the suburbs. Minutes walk to eateries, shopping, buses and train station.

Features:

- Approximately 118sqm on title
- As new timber flooring throughout
- Generous interior and private balcony
- Built ins to both bedrooms
- Master with ensuite
- Granite kitchen, gas cooking , dishwasher
- Large main bathroom
- Two secure car space
- Security intercom, gym, sauna

Quarterly Levies:

Strata: \$1621.00.00 pq approx.

2 2 2

Price	SOLD for \$780,000
Property Type	Residential
Property ID	214

Agent Details

Office Details

Ultimo
450 Harris Street Ultimo NSW 2007
Australia
02 9518 9992

CALIBRE PROPERTIES
S Y D N E Y

The above information provided has been furnished to us by the vendor/s. We have not verified whether or not that information is accurate and do not have any belief in one way or the other in its accuracy. We do not accept any responsibility to any person for its accuracy and do no more than pass it on. All interested parties should make and rely upon their own inquiries in order to determine whether or not this information is in fact accurate.